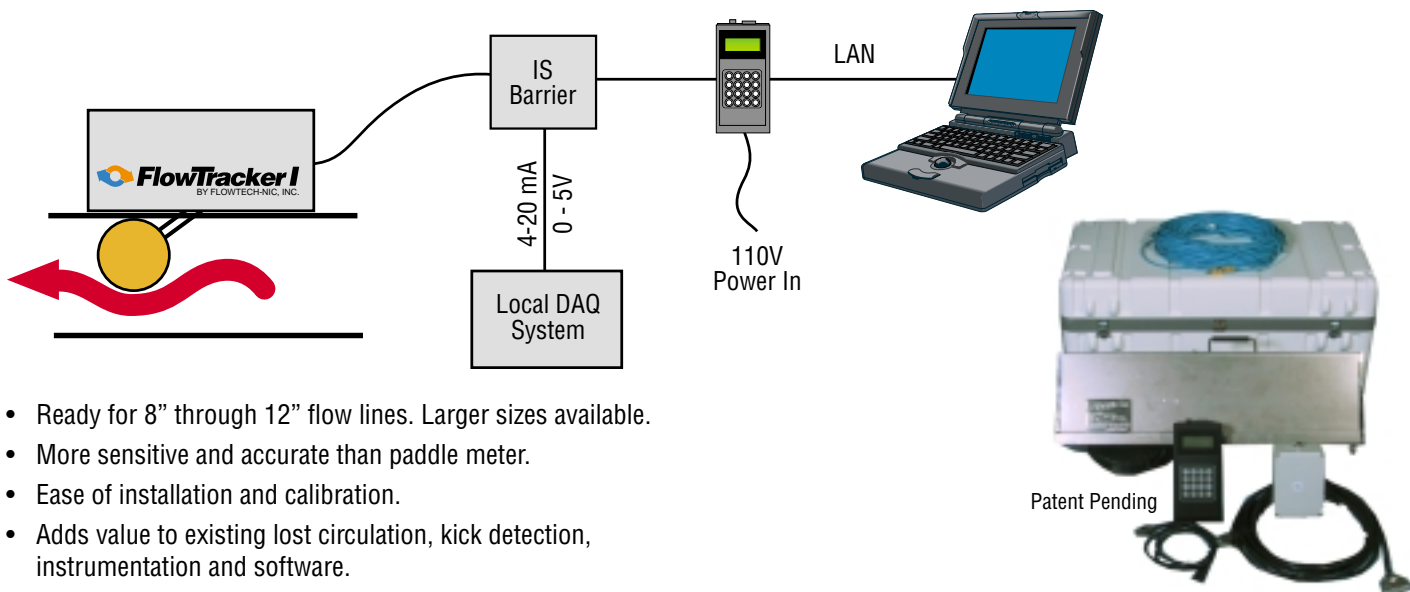




Don't get your gas kicked!

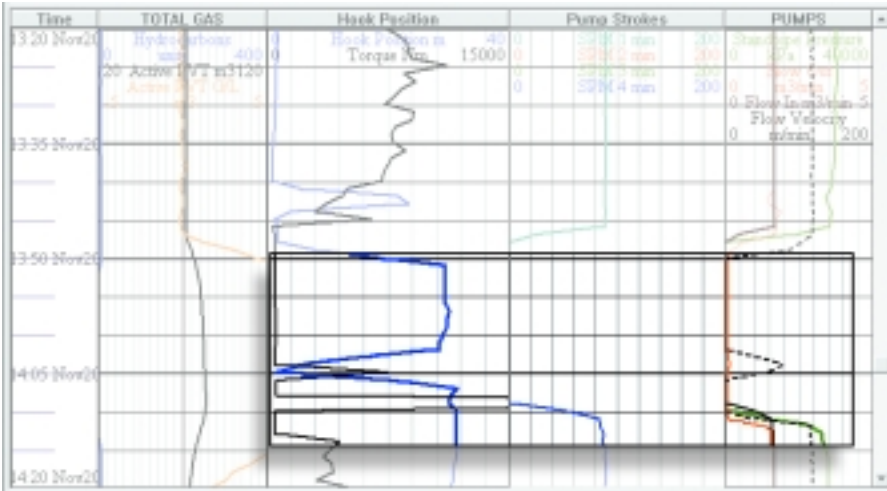


- Ready for 8" through 12" flow lines. Larger sizes available.
- More sensitive and accurate than paddle meter.
- Ease of installation and calibration.
- Adds value to existing lost circulation, kick detection, instrumentation and software.
- Enables third party software to detect "kick and losses".
- Flow range: 30 to 3000 GPM* - all fluid types.
- Intrinsically safe.
- Accommodates a variety of flow line angles.
- Values are displayed in GPM or m³/min.
- Ideal for "open loop" flow systems

**Actual flow range varies with flow line geometry.*

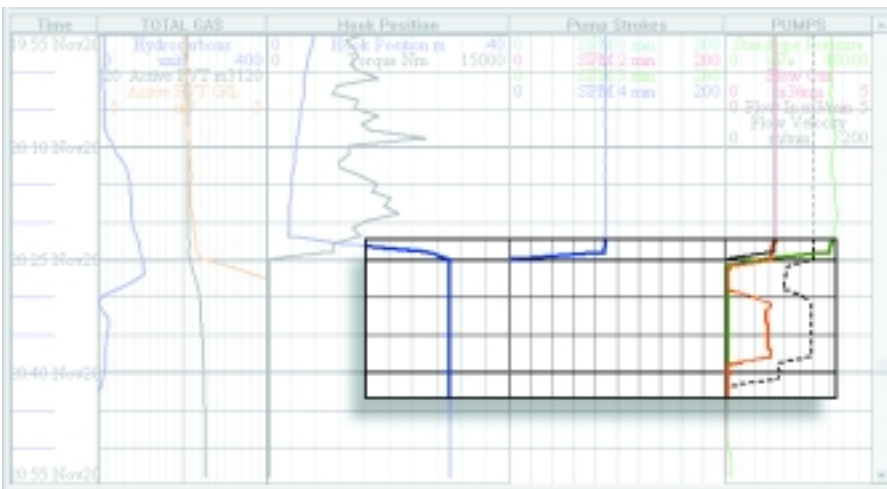
*Complete package weighs only 70 lbs.
Delivered worldwide in 48 hours.*

 **FlowTracker I**
BY FLOWTECH-NIC, INC.
www.flowtechnic.com



Flow Tracker I during connection

The first graph is the data acquired from making a connection. As the pipe is moved up or down in the wellbore (See Hook Position) and the pumps are off (See Pump Strokes), we see a rise in flow velocity. The flow rate does not increase confirming flow from the wellbore. The flow velocity is consistent with fluid displacement caused from lowering pipe into the hole (See Pumps).



Flow Tracker I showing a confirmed "kick" during a connection

In this example, notice that there is no pipe movement, or pump strokes, but there is wheel velocity and increased flow rate. This confirms that the wellbore is producing approximately 1.5 m³/min. or 396 GPM of fluid.

Legend

- █ Flow Rate Out
- Wheel Velocity
- █ Stand Pipe Pressure
- █ Hook Position/Pump Stokes
- █ Flow Rate In

All flows should be checked to confirm the cause of flow.

FlowTraker worldwide rental locations:



NORTH AMERICA

FlowTech-Nic, Inc.
627 Williams Street
Bakersfield Ca. 93305
1-661-633-2665 phn.
1-661-869-1269 fax.
info@flowtechnic.com



INDONESIA P.T.

Pelita Mustika Mandiri
Golden Gate Bldg. 2nd Floor
Jl. Radio Dalam Raya No. 5-7
Kebayoran Baru, Jakarta 12140
(62-21) 722-5665 phn.
(62-21) 720-8046 fax.
pmmjkt@rad.net.id



JAPAN

Cosmos Shoji Co., LTD.
AP Bldg. 2-Chome 10, Kanada
Tsukasa-CHO, Chiyoda-KU
Tokyo, 101-0048
81-3-5296-2504 phn.
81-3-5296-2505 fax.
akagawa@cosmos-shoji.co.jp



NORTH SEA / ABERDEEN

Stacey Oil Services, LTD.
Unit AJ Badentoy Crescent
Badentoy Park Industrial Estate
Portlethen, Aberdeen Scotland
AB12 4YD
44-1224-781-887 phn.
44-1224-782-162 fax.
peter@staceyoil.com



CANADA

Drill Cool Systems Canada, Inc.
1200, 700-2nd Street, S.W.
Calgary, Alberta
Canada T2P 4V5
780-435-9274
info@flowtechnic.com



FlowTech-Nic
INC.

www.flowtechnic.com